



July, 2016

2017 Jamboree Stadium Experience Newsletter



**378 days until the
start of the 2017
National Jamboree!**

We're on Facebook!

Our Jamboree team has just established a "closed group" Facebook page. Over the coming months we will add you, but we need to know who you are. Email newsletter editor Karen Belanger with info on how to find you on FB.

**Relationships & Office
Support Team Leader
Marianne Elden**

**Deputy Team Leader
Paul Penttila**

**Office &
Communications
Manager
Karen Belanger
kareng8r@tampabay.rr.com**

Welcome to the Stadium Experience Team!

My name is Don Wendell from Circle Ten Council in Dallas, and I'm privileged to serve as the leader for the 2017 National Jamboree Stadium Experience. I held the same position at the 2013 Jamboree, and I had such a good time that I'm back again!

I find that being a part of the Stadium Experience is very rewarding because we touch every single participant and staff member through our various programs and responsibilities. Here they are:

Shows – a Staff Show, the Main Show, and the Closing Show, as well as support of religious services and an OA show that are held at the Stadium.

Special Events – the Jambo-Palooza, Base Camp Bashes, and Lunchtime Fun.

Jamboree Band and Jamboree Performance Troupe – skilled musicians and talented singers, improv actors, and dancers.

Administrative Functions – behind the scenes work that supports and makes the Stadium Experience happen including office support; communications; media and public relations; and Summit Center, VIP and corporate sponsor relationships.

We have a super group of team leaders, many of whom are returning from the 2013 Stadium Experience. My deputy is **Carson Holmes** and our professional advisor is **Ralph Voelker**. Heading up the Shows are **David Kehrer** and **Steven McDonald**. The Special Events team is led **David Laabs**, and **Marianne Elden** is responsible for overseeing all of the administrative functions. The Jamboree Band is under the direction of **George Pinchock**. I know that you'll enjoy working with these talented and dedicated servant leaders.

Currently, we have several openings in the shows group, the special events group, the band, and



Don Wendell
Stadium Experience Area Leader

performance troupe. Please spread the word among your Scouting colleagues and encourage them to join the Stadium Experience team.

Thank you again for your service! I look forward to working with you in beautiful West Virginia.

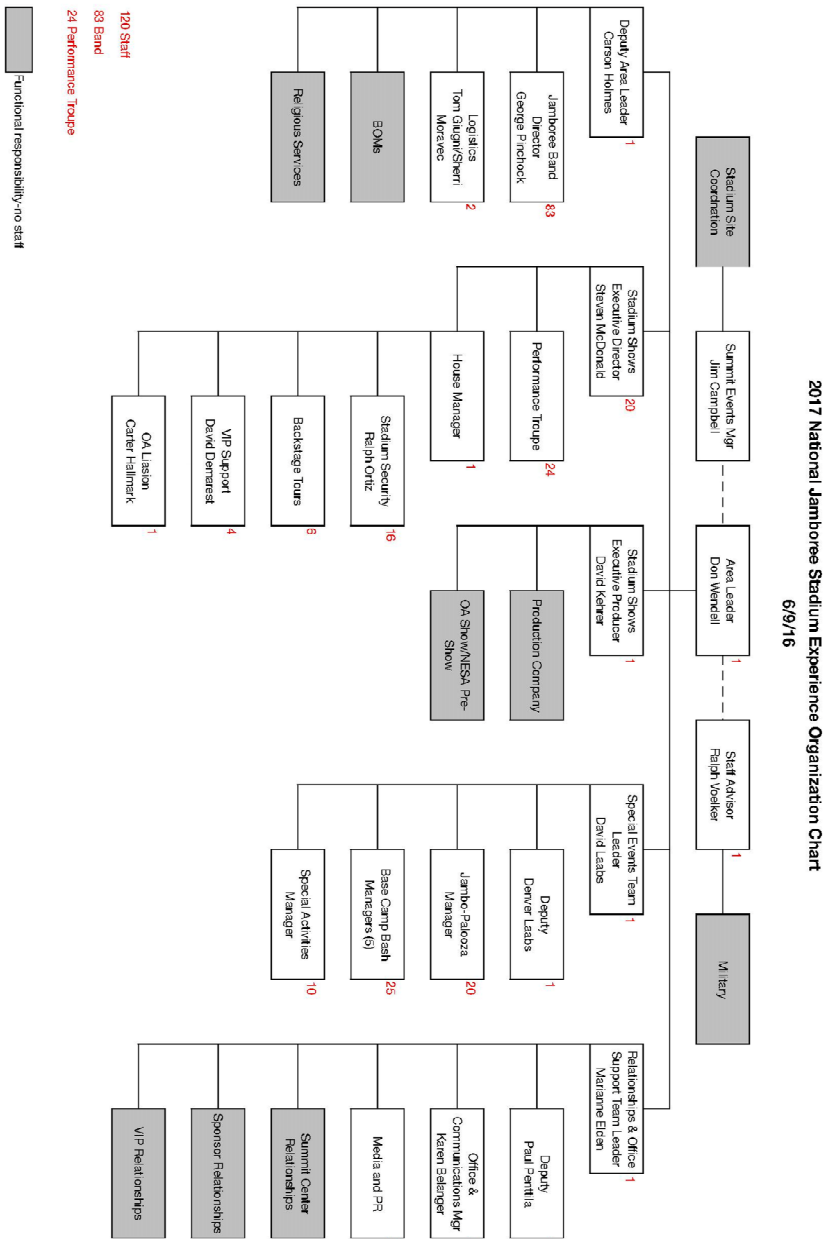
Yours in Scouting,

Don

donwendell@mac.com

214-632-0210 (mobile)

Stadium Experience Team Organization Chart



See the
Key Leader
Directory on
Page 4

Special Events Team: Base Camp Bashes New in 2017

New this year and very happening, are the *Base Camp Bashes* (BCB). The BCB will be a free-standing show held at each base camp on one night each. Starting in a base camp on night number 2, the stage and equipment will be taken down and moved late at night to set-up at the next base camp for the show the next night.

These shows are intended to provide a close-in experience for the youth participants so they can be near the stages. The

attendance at each of the BCB will be 1,000-5,000. I foresee a LOUD and youthful presentation on the stage to last 60-90 minutes each night that we do these Bashes. We will not overlap with the stadium shows obviously, so there will be some "dark" nights.

Hosted by a college-aged OA member, the music will probably be oriented more to DJs which is what this age group enjoys. We will have large sound and lighting, but it will be all

portable on a movable stage. The show content will be written by our team unlike the stadium shows and will include give-aways launched into the crowd.

Base Camp Bashes will be short, sweet and LOUD and all for the Scouts and Venturers!

*By Dave Laabs,
Special Events Team Leader*

Staff Updates

There are a number of exciting changes for 2017 that our staff may expect to make our volunteer experience just a little bit nicer. Here are just a few:

Heated Showers: Solar water heaters are being installed in the staff Base Camp that will raise the water temperature to 80°F and, with responsible

water usage, will maintain that temperature.

Expanded Staff Transportation: Staff members will not be required to walk longer than 30 minutes between their tent and their work area.

More Time Off: Staffing levels have been established to provide the

equivalent of at least one full day off for staff members during the jamboree.

Lunch Options: The number and variety of shelf stable lunch choices is being expanded.

Watch for more updates in the next issue!

"...it's the smiling faces that keep the volunteers coming back for more."

Volunteers Like You!

That's who we're looking for to make the 2017 National Jamboree at the Summit Bechtel Reserve an amazing Scouting experience.

Volunteers in the Boy Scouts of America know what it means to serve. It's the volunteer spirit that makes the hard work worth it. More importantly, it's the smiling faces that keep

the volunteers coming back for more. It's the knowledge that they're passing on a philosophy of giving that Scouts and Venturers will remember when it's their turn to step up.

From www.bsajamboree.org

There are still a number of great volunteer slots to fill on our amazing 2017 Stadium Experience team. For more information, please contact your team leader or newsletter editor Karen Belanger at:

kareng8r@tampabay.rr.com.

Stadium Experience Key Leader Directory

First Name	Last Name	Position	Email	Phone	Mobile Phone	City	State
Marianne	Elden	Relationships & Office Support Team Leader	melden@tx.rr.com	386-212-7303	386-212-7303	Santa Fe	NM
Carson	Holmes	Deputy Area Leader	carson@holmestx.com	469-766-3393	469-766-3393	Garland	TX
David	Kehrer	Stadium Shows Executive Producer	david.kehrer@gte.net	586-784-9529	586-651-1904	Armada	MI
David	Laabs	Special Events Team Leader	davidlaabs@comcast.net	248-344-4214	313-460-3116	Northville	MI
Steven	McDonald	Stadium Shows Executive Director	smcdonald@mac.com	720-890-1803	720-277-8641	Broomfield	CO
George	Pinchock	Jamboree Band Director	george.pinchock@villanova.edu	610-519-6050	610-519-6050	Villanova	PA
Ralph	Voelker	Staff Advisor	ralph.voelker@scouting.org	253-625-5281	253-948-7226	University Place	WA
Donald	Wendell	Stadium Experience Area Leader	donwendell@mac.com	972-423-4250	214-632-0210	Plano	TX



2013 Stadium Experience Staff Center Stage



Bird's-eye view of the stadium experience!



Our backstage home!